

132 SERIES

XT
XTS
XTA
XTV
HXT



Corpo e coperchi in alluminio pressofuso.

Coperchio posteriore con livello olio.

Bielle in lega zinco- alluminio pressofuso oppure in bronzo.

Testa in ottone stampato o in lega d'alluminio pressofuso.

Pistoni in ceramica.

Crankcase and back cover in pressure die-cast aluminium alloy.

Back cover incorporated with oil sight glass.

Connecting rods in die-cast zinc-aluminium alloy. Bronze connecting rods available.

Pump head in forged brass or die-cast aluminium alloy.

Ceramic plungers.

132 Series

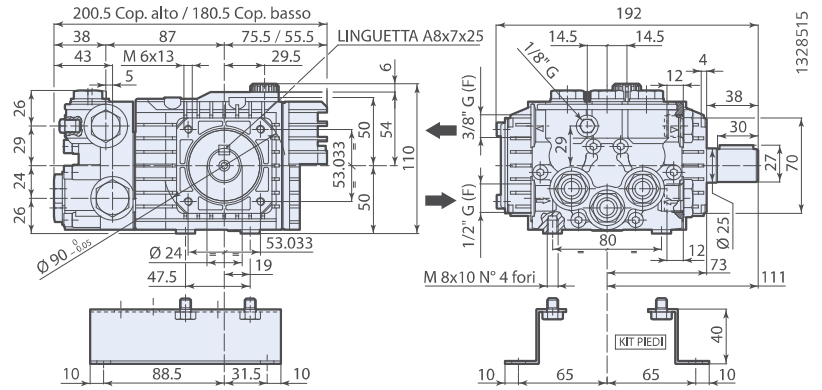
POMPA ALBERO MASCHIO
Solid shaft pump



idropultrici
pressure
washers




● Model brass head



Piedi a richiesta.
Base on request.

N version

MOD	COD	 MAX	 MAX	 MAX	 MAX					
		l/min	gpm	bar	psi	hp	kW	N° giri/1'	kg	
XT 1450rpm Nversion Ø24mm										
XT 8.10 N	7002	8	2,11	100	1450	2	1,5	1450	3,8	
● XT 8.15 N	○ 6979	8	2,11	150	2200	3	2,2	1450	5	
XT 9.11 N	○ 7006	9	2,37	110	1600	2,5	1,8	1450	4	
● XT 9.15 N	○ 6980	9	2,37	150	2200	3,5	3,2	1450	5	
XT 10.10 N	○ 7334	10	2,64	100	1450	2,5	1,8	1450	4	
● XT 10.15 N	○ 6978	10	2,64	150	2200	4	3	1450	5	
XT 11.07 N	7003	11	2,90	70	1000	2	1,5	1450	3,8	
● XT 11.15 N	○ 6981	11	2,90	150	2200	4,3	3,2	1450	5	
XT 13.09 N	○ 7009	13	3,43	90	1300	3	2,2	1450	4	
● XT 13.15 N	○ 6982	13	3,43	150	2200	5	3,6	1450	5	
XTS 2800rpm Nversion Ø24mm										
XTS 8.10 N	7032	8	2,11	100	1450	2	1,5	2800	3,8	
● XTS 8.15 N	○ 7412	8	2,11	150	2200	3	2,2	2800	5	
XTS 10.10 N	7332	10	2,64	100	1450	2,5	1,8	2800	3,8	
● XTS 10.15 N	○ 7413	10	2,64	150	2200	4	3	2800	5	
XTS 11.11 N	7035	11	2,90	110	1600	3	2,2	2800	3,8	
● XTS 11.15 N	○ 7414	11	2,90	150	2200	4,3	3,2	2800	5	
XTS 13.09 N	7037	13	3,43	90	1300	3	2,2	2800	3,8	
● XTS 13.15 N	○ 7415	13	3,43	150	2200	5	3,6	2800	5	
XTA 1750rpm Nversion Ø24mm										
XTA 2 G15 N	7072	8	2,11	100	1450	2	1,5	1750	3,8	
● XTA 2 G22 N	○ 7416	8	2,11	150	2200	3	2,2	1750	5	
XTA 3 G16 N	○ 7437	11,4	3	110	1600	3	2,2	1750	4	
● XTA 3 G22 N	○ 7417	11,4	3	150	2200	4,5	3,4	1750	5	
XTA 3.5 G13 N	○ 7438	13,2	3,5	90	1300	3	2,2	1750	4	
● XTA 3.5 G20 N	○ 7418	13,2	3,5	140	2000	5	3,6	1750	5	
XTA 4 G10 N	7079	15,1	4	70	1000	3	2,2	1750	3,8	
XTA 4 G15 N	○ 7083	15,1	4	100	1450	4	3	1750	4	



● testa in
ottone
brass
head



○ bielle in
bronzo
bronze
connecting-rods



testa in
alluminio
aluminium
head



bielle in
alluminio
aluminium
connecting-rods



132 Series

POMPA ALBERO CAVO Hollow shaft pump

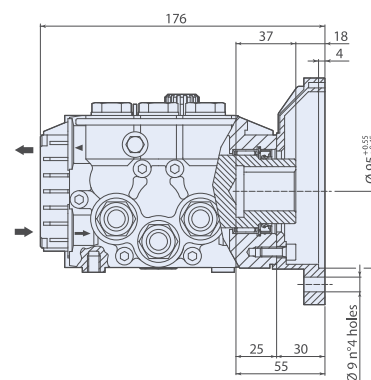
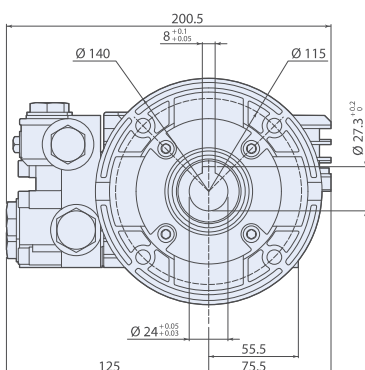


idropultrici
pressure
washers



● Model brass head

1328507



Flangia F6 fornita a richiesta.
F6 flange on request.

C version

MOD	COD	MAX		MAX		MAX		kg	
		l/min	gpm	bar	psi	hp	kW		
XT 1450rpm Cversion Ø24mm									
XT 8.10 C	7018	8	2,11	100	1450	2	1,5	1450	3,8
● XT 8.14 C	○ 7025	8	2,11	140	2000	3	2,2	1450	5
XT 9.11 C	○ 7022	9	2,37	110	1600	2,5	1,8	1450	4
● XT 9.14 C	○ 6991	9	2,37	140	2000	3,3	2,4	1450	5
XT 11.11 C	○ 7103	11	2,90	110	1600	3	2,2	1450	4
● XT 11.14 C	○ 7104	11	2,90	140	2000	4	3	1450	4
XT 13.09 C	○ 7119	13	3,43	90	1300	3	2,2	1450	4
XTS 2800rpm Cversion Ø24mm									
XTS 8.10 C	7061	8	2,11	100	1450	2	1,5	2800	3,8
● XTS 8.14 C	○ 7068	8	2,11	140	2000	3	2,2	2800	5
XTS 11.11 C	○ 7064	11	2,90	110	1600	3	2,2	2800	4
● XTS 11.14 C	○ 7069	11	2,90	140	2000	4	3	2800	5
XTS 13.09 C	○ 7066	13	3,43	90	1300	3	2,2	2800	4
● XTS 13.12 C	○ 7287	13	3,43	120	1740	4	3	2800	5



● testa in
ottone
brass
head



○ bielle in
bronzo
bronze
connecting-rods



testa in
alluminio
aluminium
head



bielle in
alluminio
aluminium
connecting-rods

Flangia F6, per motori elettrici B14 Gr.90 IEC34-7. Flangia non inclusa.
F6 flange for electric motor B14 90 IEC34-7. Flange not included.

132 Series

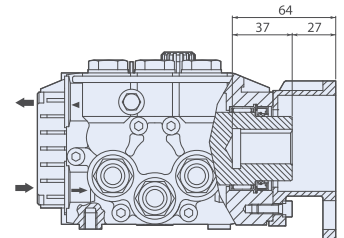
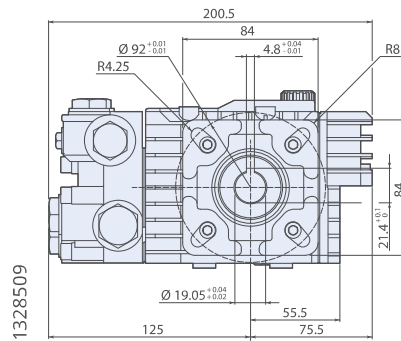
POMPA ALBERO CAVO Hollow shaft pump



idropultrici
pressure
washers



● Model brass head



Flangia F7 fornita a richiesta.
F7 flange on request.

D version

MOD	COD	MAX		MAX				KG NET	
		l/min	gpm	bar	psi	hp	kW	N° giri/1'	kg
XTV 3400rpm Dversion Ø3/4"									
XTV 2 G15 D	7294	8	2,11	100	1450	2	1,5	3400	3,8
● XTV 2 G22 D	○ 7419	8	2,11	150	2200	3	2,2	3400	5
XTV 3 G10 D	7296	11,4	3	70	1000	2	1,5	3400	3,8
● XTV 3 G22 D	○ 7420	11,4	3	150	2200	4,5	3,4	3400	5

Per motori scoppio flangia F7 Ø 3/4" SAE J609a. Flangia non inclusa.
For gasoline engine flange F7 Ø 3/4" SAE J609a. Flange not included.



● testa in
ottone
brass
head



○ bielle in
bronzo
bronze
connecting-rods



testa in
alluminio
aluminium
head



bielle in
alluminio
aluminium
connecting-rods



132 Series

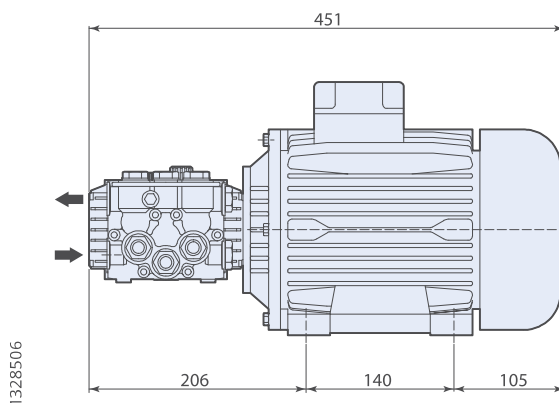
ELECTRIC MOTOR-PUMP UNITS



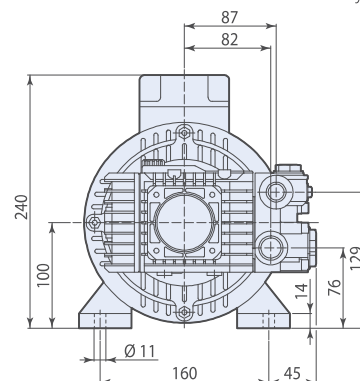
idropultrici
pressure
washers



Model aluminium head



GR. 100 motor hollow shaft



MOD	COD	MAX		MAX								KG NET	
	1 ~	3 ~	l/min	gpm	bar	psi	hp	kW	N° giri/1'	V 1-50Hz	V 3-50Hz	Gr.	kg
HXT 1450rpm													
● HXT 8.14 EM	7146	-	8	2,11	140	2000	3	2,2	1450	230	-	100	28,5
● HXT 11.11 EM	7148	-	11	2,90	110	1600	3	2,2	1450	230	-	100	28
● HXT 11.14 ET	-	7154	11	2,90	140	2000	4	3	1450	-	230/400	100	30
● HXT 13.12 ET	-	7155	13	3,43	120	1740	4	3	1450	-	230/400	100	30



● testa in
ottone
brass
head



● testa in
alluminio
aluminium
head



● bielle in
bronzo
bronze
connecting-rods



1~50Hz
frequenza
motore
motor
frequency



3~50Hz
frequenza
motore
motor
frequency



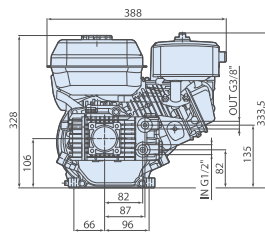
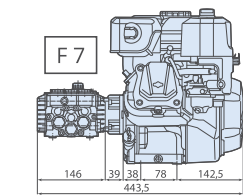
idropulitrici
pressure
washers



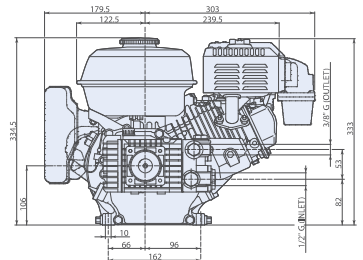
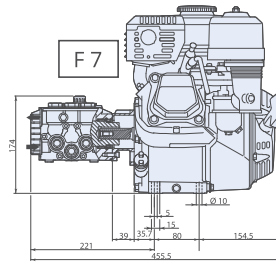
XTV 3400 rpm Direct Drive
from B&S engine



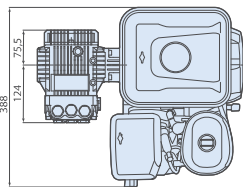
XTV 3400 rpm Direct Drive
from Honda engine



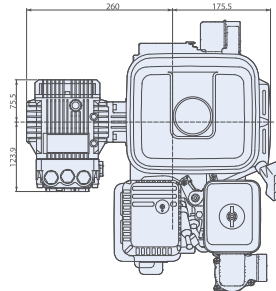
XTV 2 G15 B&S 550



XTV 3 G16 Honda GX160



1328519



1328517

MOD	COD	MAX	MAX	RPM	NET			
	Engine HP	l/min	gpm	bar	psi	N° giri/1'	kg	
XTV Direct Drive								
XTV 2 G15 B&S 550	3,5	7466	8	2,11	100	1450	3400	18,5
• XTV 3 G16 HONDA GX 160K1-QX Type	4,8	7469	11,4	3	110	1600	3400	20



• testa in
ottone
brass
head



testa in
alluminio
aluminium
head



bielle in
alluminio
aluminium
connecting-
rods



motore a
scoppio
gasoline
engine