

320 SERIES

RC
RCA
RCS
RCV
RC-M
RCA-M

HRC



Corpo e coperchi in alluminio pressofuso.

Coperchio laterale chiuso o con livello olio. Coperchio posteriore con scarico olio.

Bielle in lega zinco- alluminio pressofuso.

Testa in ottone stampato con possibilità di valvola di regolazione integrata.

Pistoni in ceramica.

Crankcase and back cover in pressure die-cast aluminium alloy.

Side cover closed or incorporated with oil sight glass. Back cover incorporated with oil drain outlet.

Connecting rods in die-cast zinc-aluminium alloy.

Pump head in forged brass. Possibility to have integrated pressure regulating valve on pump head.

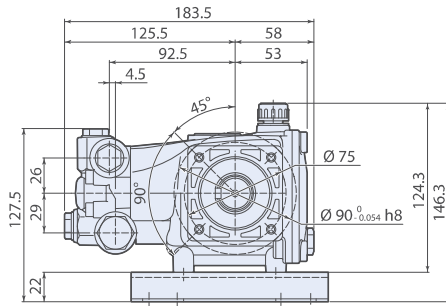
Ceramic plungers.

320 Series

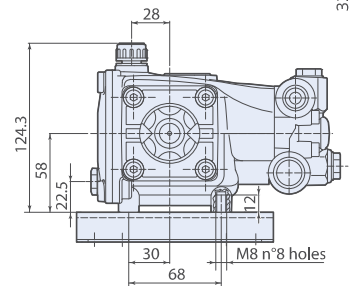
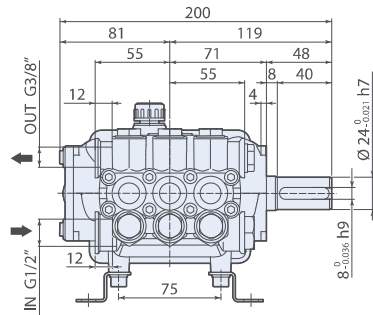
POMPA ALBERO MASCHIO
Solid shaft pump



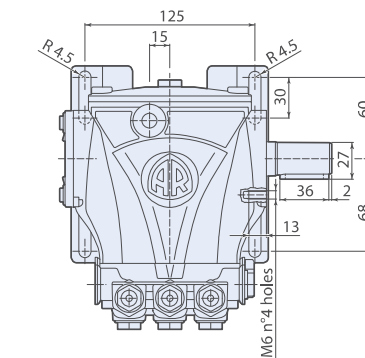
idropultrici
pressure
washers



Piedi a richiesta.
Base on request.



3208500



Flangiatura compatibile XT N.
XT N flange type.

N version

MOD	COD	MAX	MAX	NET					
		l/min	gpm	bar	psi	hp	kW	N° giri/1'	kg

RC 1450rpm Nversion Ø24mm									
RC 8.15 N	23260	8	2,11	150	2200	3	2,2	1450	5
RC 9.15 N	23263	9	2,37	150	2200	3,5	3	1450	5
RC 10.12 N	23384	10	2,64	120	1740	3	2,2	1450	5
RC 10.15 N	23436	10	2,64	150	2200	4	3	1450	5
RC 11.17 N	23261	11	2,90	170	2500	5	3,7	1450	5
RC 12.17 N	23262	12	3,20	170	2500	5,5	4	1450	5
RC 13.17 N	23081	13	3,43	170	2500	5,5	4	1450	5
RC 14.16 N	23301	14	3,70	160	2300	5,5	4	1450	5
RC 14.20 N	26920	14	3,70	200	2900	7,5	5,5	1450	5
RCA 1750rpm Nversion Ø24mm									
RCA 2.5 G25 N	23437	9,5	2,5	170	2500	4,5	3,3	1750	5
RCA 3 G25 N	23438	11,4	3	170	2500	5	3,7	1750	5
RCA 3.5 G25 N	23264	13,2	3,5	170	2500	5,5	4	1750	5
RCS 2800rpm Nversion Ø24mm									
RCS 8.17 N	23667	8	2,11	170	2500	3	2,2	2800	5
RCS 11.17 N	23670	11	2,90	170	2500	5	3,7	2800	5
RCS 13.17 N	23671	13	3,43	170	2500	5,5	4	2800	5
RCS 15.15 N	23672	15	3,96	150	2200	5,5	4	2800	5



testa in
ottone
brass
head



bielle in
alluminio
aluminium
connecting-rod

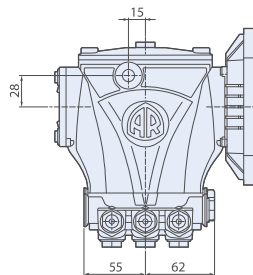
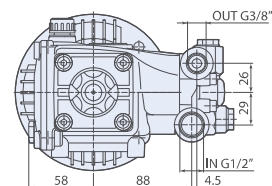
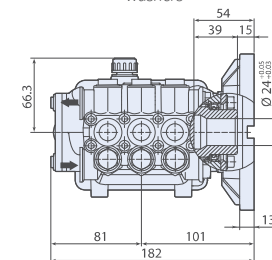
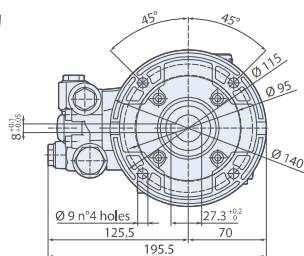


320 series

POMPA ALBERO CAVO Hollow shaft pump



idropultrici
pressure
washers



3208503

C version + F6

MOD	COD	MAX	MAX		KG NET				
		l/min	gpm	bar	psi	hp	kW	N° giri/1'	kg



testa in
ottone
brass
head



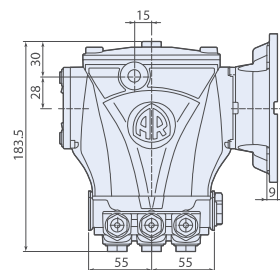
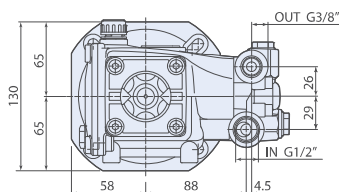
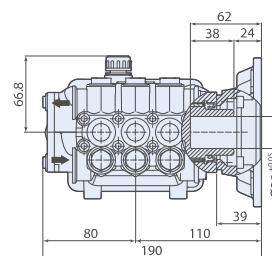
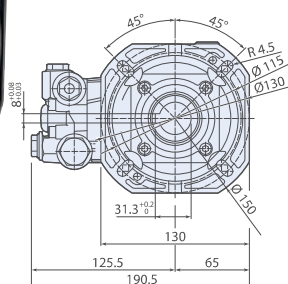
bielle in
alluminio
aluminium
connecting-rods

RC 1450rpm Cversion + F6 Ø24mm

RC 8.15 C + F6	23493	8	2,11	150	2200	3	2,2	1450	5,5
RC 9.14 C + F6	23494	9	2,37	140	2000	3,3	2,4	1450	5,5
RC 11.11 C + F6	23495	11	2,90	110	1600	3	2,2	1450	5,5

Flangia F6, per motori elettrici B14 Gr.90 IEC34-7, 4 poli 50Hz. Flangia inclusa.
F6 flange for electric motor B14 90 IEC34-7, 4 poles 50Hz. Flange included.

POMPA ALBERO CAVO Hollow shaft pump



3208509



idropultrici
pressure
washers

C version + F44

MOD	COD	MAX	MAX		KG NET				
		l/min	gpm	bar	psi	hp	kW	N° giri/1'	kg



testa in
ottone
brass
head



bielle in
alluminio
aluminium
connecting-rods

RC 1450rpm Cversion + F44 Ø28mm

RC 12.10 C + F44	23902	12	3,20	100	1450	3	2,2	1450	5,5
RC 13.17 C + F44	23535	13	3,43	170	2500	5,5	4	1450	5,5
RC 14.16 C + F44	23536	14	3,70	160	2300	5,5	4	1450	5,5

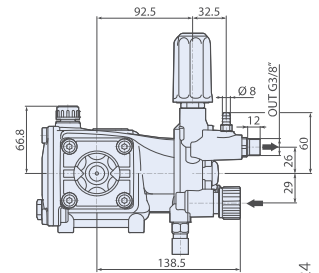
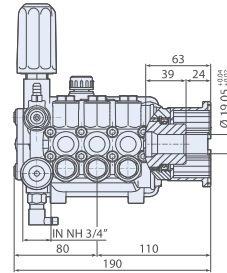
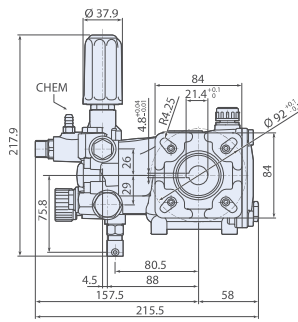
Flangia F44 per motori elettrici B14 Gr.100 IEC34-7, 4 poli 50Hz. Flangia inclusa.
F44 flange for electric motor B14 100 IEC34-7, 4 poles 50Hz. Flange included.

320 Series

POMPA ALBERO CAVO Hollow shaft pump



idropultrici
pressure
washers



3208524

D version + F7

MOD	COD	MAX	MAX		NET				
		l/min	gpm	bar	psi	hp	kW	N° giri/1'	kg

RCV 3400rpm Dversion + F7 Ø 3/4"

RCV 2.5 G25 D + F7	23970	9,5	2,5	170	2500	4,5	3,3	3400	5,5
RCV 3 G25 D + F7	23471	11,4	3	170	2500	5	3,7	3400	5,5
RCV 3.5 G25 D + F7	23971	13,2	3,5	170	2500	5,5	4	3400	5,5

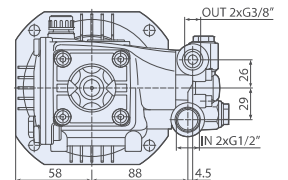
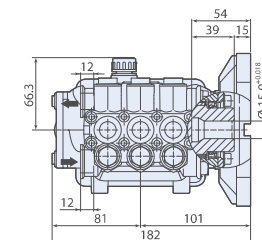
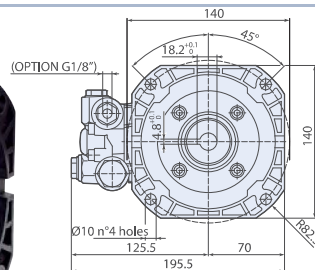
Per motori scoppio flangia Ø 3/4" SAE J609a. Flangia inclusa.
For gasoline engine flange Ø 3/4" SAE J609a. Flange included.



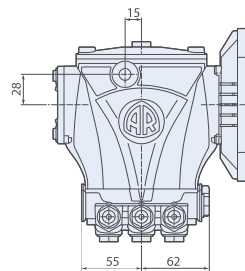
testa in
ottone
brass
head



bielle in
alluminio
aluminium
connecting-rods



3208502



idropultrici
pressure
washers

E version + F8

MOD	COD	MAX	MAX		NET				
		l/min	gpm	bar	psi	hp	kW	N° giri/1'	kg

RCA 1750rpm Eversion + F8 Ø 5/8"

RCA 2 G22 E + F8	23439	8	2,11	150	2200	3	2,2	1750	5,5
RCA 3 G18 E + F8	23440	11,4	3	120	1740	4	3	1750	5,5
RCA 3.5 G16 E + F8	23468	13,2	3,5	110	1600	4	3	1750	5,5

RCV 3400rpm Eversion + F8 Ø 5/8"

RCV 2 G25 E + F8	23469	8	2,11	170	2500	5	3,7	3400	5,5
RCV 3 G25 E + F8	23107	11,4	3	170	2500	5	3,7	3400	5,5



testa in
ottone
brass
head



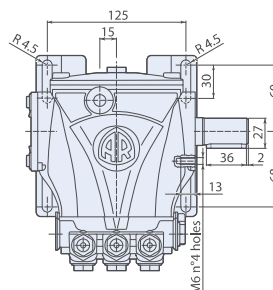
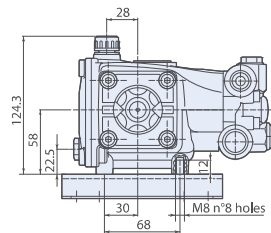
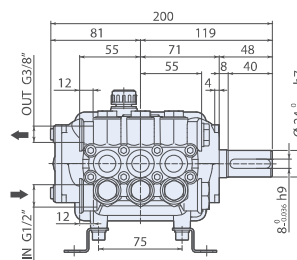
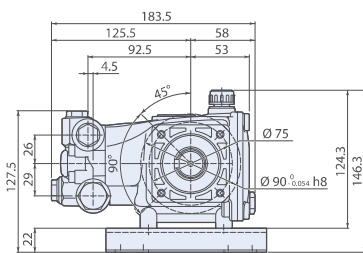
bielle in
alluminio
aluminium
connecting-rods

Flangia F8 per motori elettrici NEMA 56-C, 60Hz. Flangia inclusa.
F8 flange for electric motor NEMA 56-C, 60Hz. Flange included.



320 series

POMPA ALBERO MASCHIO Solid shaft pump



Piedi a richiesta.
Base on request.

3208500



misting

N version

Flangiatura compatibile XT N.
XT N flange type.

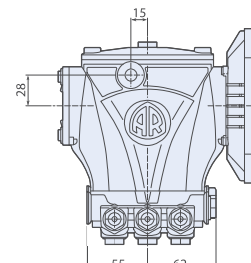
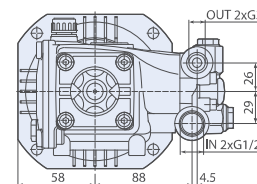
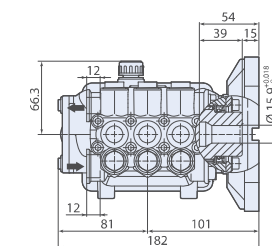
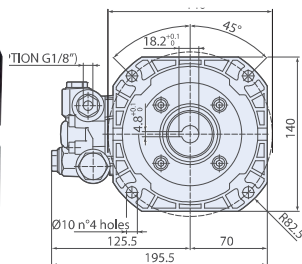
MOD	COD	MAX	MAX		NET	l/min	gpm	bar	psi	hp	kW	N° giri/1'	kg
RC-M 1450rpm Nversion Ø24mm													
RC-M 01.10 N	23441	1	0,26	100	1450	0,26	0,2	1450	5				
RC-M 02.10 N	23432	2	0,52	100	1450	0,52	0,4	1450	5				
RC-M 03.10 N	23442	3	0,80	100	1450	0,78	0,58	1450	5				
RC-M 04.10 N	23083	4	1,06	100	1450	1,05	0,77	1450	5				
RC-M 05.10 N	23443	5	1,33	100	1450	1,31	0,98	1450	5				
RC-M 06.10 N	23444	6	1,58	100	1450	1,57	1,17	1450	5				



testa in ottone
brass head



bielle in alluminio
aluminium connecting-rods



POMPA ALBERO CAVO Hollow shaft pump



misting

E version + F8

MOD	COD	MAX	MAX		NET	l/min	gpm	bar	psi	hp	kW	N° giri/1'	kg
RCA-M 1750rpm Eversion + F8 Ø 5/8"													
RCA-M 0.5G15 E + F8	23349	2	0,52	100	1450	0,52	0,4	1750	5,5				
RCA-M 1G15 E + F8	23108	4	1,06	100	1450	1,26	0,93	1750	5,5				
RCA-M 2G15 E + F8	23445	8	2,11	100	1450	2,10	1,55	1750	5,5				



testa in ottone
brass head



bielle in alluminio
aluminium connecting-rods

Flangia F8 per motori elettrici NEMA 56-C, 60Hz. Flangia inclusa.
F8 flange for electric motor NEMA 56-C, 60Hz. Flange included.

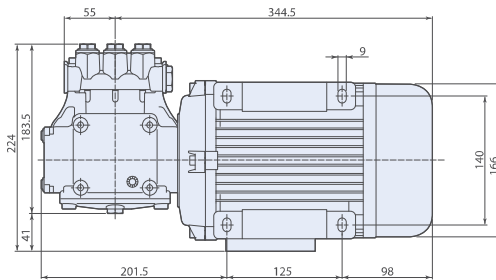
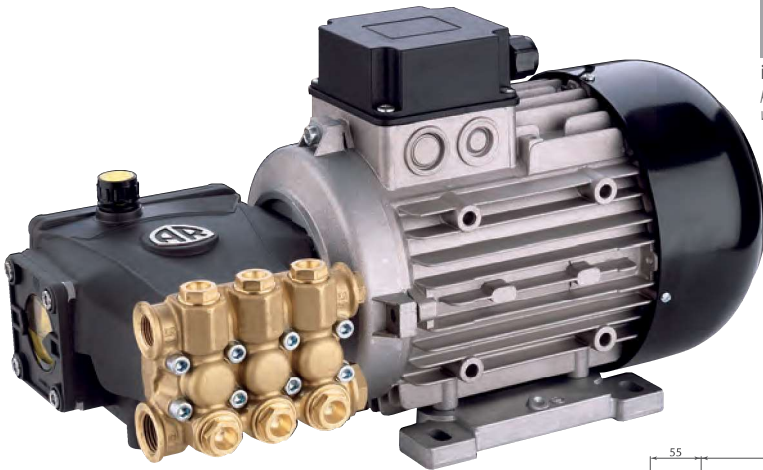
3208502

320 Series

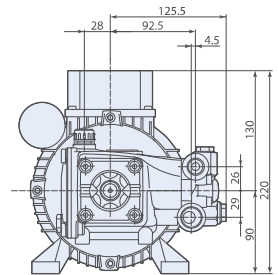
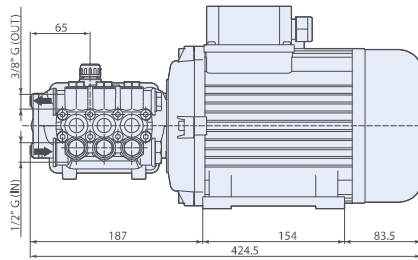
ELECTRIC MOTOR-PUMP UNITS



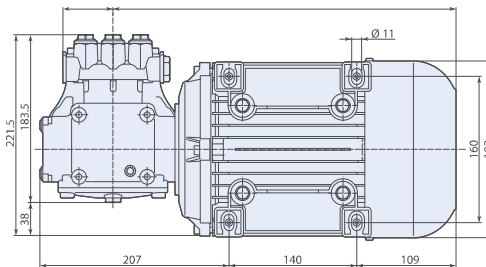
idropulitrici
pressure
washers



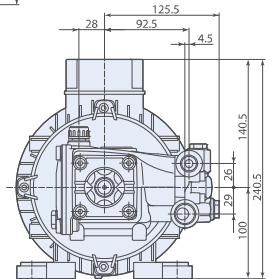
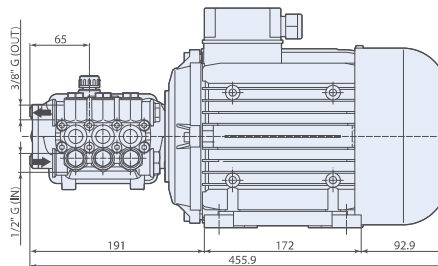
GR. 90L motor hollow shaft
1~



3208525



GR. 100 motor hollow shaft
3~



3208510

MOD	COD	MAX	MAX										
	1~ 3~	l/min	gpm	bar	psi	hp	kW	N° giri/1'	V 1-50Hz	V 3-50Hz	Gr.	kg	
HRC 1450 rpm													
HRC 10.13 EM	23485	-	10	2,64	130	1900	3	2,2	1450	230	-	90	22,1
HRC 12.11 EM	23486	-	12	3,20	110	1600	3	2,2	1450	230	-	90	22,3
HRC 11.15 ET	-	23453	11	2,90	150	2200	4	3	1450	-	230/400	100	28
HRC 13.17 ET	-	23454	13	3,43	170	2500	5,5	4	1450	-	230/400	100	30
HRC 14.16 ET	-	23455	14	3,70	160	2300	5,5	4	1450	-	230/400	100	30



testa in
ottone
brass
head



bielle in
alluminio
aluminium
connecting-rod



1~50Hz
frequenza
motore
motor
frequency



3~50Hz
frequenza
motore
motor
frequency

132 SERIES

XT
XTS
XTA
XTV
HXT



Corpo e coperchi in alluminio pressofuso.

Coperchio posteriore con livello olio.

Bielle in lega zinco- alluminio pressofuso oppure in bronzo.

Testa in ottone stampato o in lega d'alluminio pressofuso.

Pistoni in ceramica.

Crankcase and back cover in pressure die-cast aluminium alloy.

Back cover incorporated with oil sight glass.

Connecting rods in die-cast zinc-aluminium alloy. Bronze connecting rods available.

Pump head in forged brass or die-cast aluminium alloy.

Ceramic plungers.

132 Series

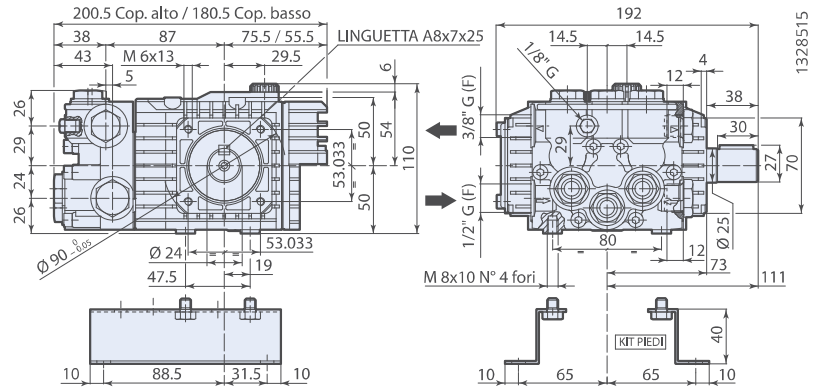
POMPA ALBERO MASCHIO
Solid shaft pump



idropultrici
pressure
washers










● Model brass head



Piedi a richiesta.
Base on request.

N version

MOD	COD	 MAX	 MAX	 MAX	 MAX				
		l/min	gpm	bar	psi	hp	kW	N° giri/1'	kg
XT 1450rpm Nversion Ø24mm									
XT 8.10 N	7002	8	2,11	100	1450	2	1,5	1450	3,8
● XT 8.15 N	○ 6979	8	2,11	150	2200	3	2,2	1450	5
XT 9.11 N	○ 7006	9	2,37	110	1600	2,5	1,8	1450	4
● XT 9.15 N	○ 6980	9	2,37	150	2200	3,5	3,2	1450	5
XT 10.10 N	○ 7334	10	2,64	100	1450	2,5	1,8	1450	4
● XT 10.15 N	○ 6978	10	2,64	150	2200	4	3	1450	5
XT 11.07 N	7003	11	2,90	70	1000	2	1,5	1450	3,8
● XT 11.15 N	○ 6981	11	2,90	150	2200	4,3	3,2	1450	5
XT 13.09 N	○ 7009	13	3,43	90	1300	3	2,2	1450	4
● XT 13.15 N	○ 6982	13	3,43	150	2200	5	3,6	1450	5
XTS 2800rpm Nversion Ø24mm									
XTS 8.10 N	7032	8	2,11	100	1450	2	1,5	2800	3,8
● XTS 8.15 N	○ 7412	8	2,11	150	2200	3	2,2	2800	5
XTS 10.10 N	7332	10	2,64	100	1450	2,5	1,8	2800	3,8
● XTS 10.15 N	○ 7413	10	2,64	150	2200	4	3	2800	5
XTS 11.11 N	7035	11	2,90	110	1600	3	2,2	2800	3,8
● XTS 11.15 N	○ 7414	11	2,90	150	2200	4,3	3,2	2800	5
XTS 13.09 N	7037	13	3,43	90	1300	3	2,2	2800	3,8
● XTS 13.15 N	○ 7415	13	3,43	150	2200	5	3,6	2800	5
XTA 1750rpm Nversion Ø24mm									
XTA 2 G15 N	7072	8	2,11	100	1450	2	1,5	1750	3,8
● XTA 2 G22 N	○ 7416	8	2,11	150	2200	3	2,2	1750	5
XTA 3 G16 N	○ 7437	11,4	3	110	1600	3	2,2	1750	4
● XTA 3 G22 N	○ 7417	11,4	3	150	2200	4,5	3,4	1750	5
XTA 3.5 G13 N	○ 7438	13,2	3,5	90	1300	3	2,2	1750	4
● XTA 3.5 G20 N	○ 7418	13,2	3,5	140	2000	5	3,6	1750	5
XTA 4 G10 N	7079	15,1	4	70	1000	3	2,2	1750	3,8
XTA 4 G15 N	○ 7083	15,1	4	100	1450	4	3	1750	4



● testa in
ottone
brass
head



○ bielle in
bronzo
bronze
connecting-rods



testa in
alluminio
aluminium
head



bielle in
alluminio
aluminium
connecting-rods